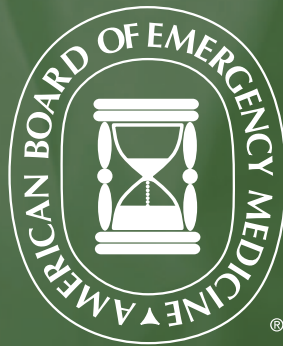
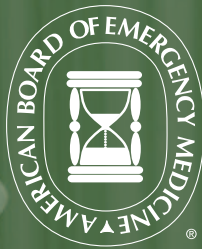


AMERICAN BOARD OF EMERGENCY MEDICINE

ANNUAL REPORT



2022-2023



ABEM'S MISSION TO ENSURE THE HIGHEST STANDARDS IN THE SPECIALTY OF EMERGENCY MEDICINE

ABEM'S PURPOSES¹

- To improve the quality of emergency medical care
- To establish and maintain high standards of excellence in Emergency Medicine and its subspecialties
- To enhance medical education in the specialty of Emergency Medicine and related subspecialties
- To evaluate physicians and promote professional development through initial and continuing certification in Emergency Medicine and its subspecialties
- To certify physicians who have demonstrated special knowledge and skills in Emergency Medicine and its subspecialties
- To enhance the value of certification for ABEM diplomates
- To serve the public and medical profession by reporting the certification status of the diplomates of the American Board of Emergency Medicine

¹ABEM holds the interests of patients and their families in the highest standing, particularly with regard to the provision of the safest and highest-quality emergency care. ABEM addresses its commitment to patients by supporting the physicians who provide care to the acutely ill and injured, and by working to transform the specialty of Emergency Medicine.

ABEM'S GUIDING PRINCIPLES

The following overarching principles will guide ABEM's strategy and work going forward:

- Serve the public and the specialty
- Strengthen a culture of innovation in certification
- Embrace and integrate diversity, equity, and inclusion in all of our work
- Advance the values of trust, integrity, resilience, collaboration, empathy, and wisdom
- Collaborate with our stakeholders
- Communicate the value of certification
- Use research to inform and validate our certification and processes

TABLE OF CONTENTS

President’s Message	2
Leadership	4
ABEM-certified Physicians.....	5
Examination Activity	7
Staying Certified	8
Subspecialty Certification	9
Volunteers	10
2022-2023 Highlights	12
Finances	15
Senior Directors	17
Examination Statistics	18

PRESIDENT'S MESSAGE

The past year has been tumultuous for Emergency Medicine. Specifically, the 2023 Match results, increased violence against providers, and the growing use of advance practice providers in the emergency department are contributing to stress among us and our colleagues. As clinically active physicians, ABEM directors are acutely aware of the challenges faced by emergency physicians. As I noted in the [Open Letter Regarding the 2023 Match](#), “[O]ur incredible capacity as individuals and as a specialty to continuously absorb the inefficiencies and gaps in our health systems has been saturated.” In the face of this challenge, it is more important than ever for ABEM to maintain the highest standards in certification, while our specialty’s leaders seek solutions to the pervasive issues that challenge our emergency departments.

One way we supported you is by promoting the value of ABEM-certified physicians to hospitals, health systems, and the public. Our digital and environmental ads (billboards, signs at airports, etc.) have garnered positive responses from both participating physicians and health systems. We received comments such as: “The pilot sparked conversations about medical specialty certification at my hospital;” and, “The pilot helped explain why patients should value board certified emergency physicians.” Health care systems commented that: “ABEM seems committed to advocating for its board-certified physicians” and “I better understand my hospital’s commitment to hiring board-certified emergency physicians.”

We also commissioned a Harris Poll and found that 76% of adults surveyed think that board certification for emergency physicians is very important, and that 98% feel that retesting to maintain certification is important.* We communicated this during our digital campaigns



Samuel M. Keim, M.D., M.S.

and with conversations with hospital executives and hospital systems in order to reinforce how important board-certified emergency physicians are and the effort emergency physicians put forth to remain certified.

In 2023, MyEMSCert was launched, providing EMS-certified physicians a new way to stay certified. The process is similar to MyEMCert, with open-book, topic-specific modules that provide immediate answers and rationales. Knowledge Advancement questions based on a series of readings will keep physicians up to date with current advancements in EMS.

A new learning opportunity, the Resuscitation module, was released in early 2023. The primary goal of this no-cost module is to enhance physician knowledge, skills, and abilities in the evaluation and practice of resuscitation for newborn, child, and adult populations. This module is available to increase the value of your certification and offer additional opportunities for you to stay current in the practice of Emergency Medicine. Although the module cannot be used to meet continuing certification requirements, optional, low-cost CME is available.

During the year, ABEM developed two new modules to assist ABEM-certified physicians meet new DEA requirements: the Substance Use Disorder (SUD) and Opioid Use Disorder (OUD) modules. There are 4 CME credits available for the SUD module, and 2 credits for the OUD module. Those who take the MyEMCert Social and Behavioral Health module and register for the associated CME credits can count 2 credits toward the DEA requirement, which in total will meet the new 8-credit requirement.

In September 2022, Board member J. Dave Barry, M.D., tragically died while surfing in California, resulting in a profound loss not only to his family, friends, and coworkers, but to the Board and the specialty. Dave was a 25-year Army veteran, following residency with multiple wartime deployments. While in the Army, he served as residency director at the Naval Medical Center Portsmouth, and during his last deployment he continued his work as a program director, conducting resident interviews from Afghanistan. Dave encouraged his residents and colleagues to maintain an appropriate work-life balance. He was first to volunteer for projects and to call ABEM-certified physicians who had questions about the Board. ABEM will be honoring Dave by providing an annual donation to the ACEP Government Services Chapter for their COL (Dr.) Dave Barry Fellowship in Leadership Development and an annual donation to the American Board of Medical Specialties (ABMS) to fund the J. Dave Barry, M.D., ABEM Visiting Scholar.

In March 2023, Health Care Administration, Leadership, and Management (HALM) was approved as a new subspecialty by ABMS. HALM is geared toward institutional leaders with experience in health systems leadership. The first certification exam will take place in late 2024. Approval of HALM brings the number of ABEM-offered subspecialties to 11, with an additional four available to ABEM-certified physicians from other ABMS boards.

In 2021, ABEM launched the Becoming Certified Initiative to explore the entire process of initial certification. Since that time, we convened focus groups, conducted multiple surveys, and held summits. We asked what was successful about the initial certification process and what could be improved. The feedback has informed what and how the process might be modified. We will be collating that information and examining potential revisions. We hope to report any changes to be implemented by the end of 2023.

This year, the second Dr. Leon L. Haley, Jr., Bridge to the Future of Emergency Medicine Academy was held. Ten rising second-year medical students participated in didactics, received hands-on training at two nearby residency programs, received insights into the residency application process, and presented a portfolio project. We hope that the Academy will foster additional interest in Emergency Medicine among students underrepresented in medicine.

Each of these activities were undertaken with you—the emergency physician—in mind. Providing no-cost learning opportunities and having the ability to meet the new DEA requirements with low-cost CME are examples of how ABEM develops products to meet your needs. Additional career prospects are available through subspecialty certification in HALM. EMS physicians now recertify using a more flexible process. And promoting you and the high standards of your certification sets you apart as ABEM-certified physicians leading team-based care in the emergency department. We hope you agree and want to thank you for all you do!

* Survey Method - This survey was conducted online within the United States by The Harris Poll on behalf of ABEM from January 12-17, 2023, among 2,082 U.S. adults ages 18 and older. The sampling precision of Harris online polls is measured by using a Bayesian credible interval. For this study, the sample data is accurate to within +/- 2.8 percentage points using a 95% confidence level. For complete survey methodology, including weighting variables and subgroup sample sizes, please contact ABEM at abem@abem.org.

LEADERSHIP

Board of Directors

Executive Committee

Samuel M. Keim, M.D., M.S., *President*
Marianne Gausche-Hill, M.D., *Immediate-Past-President*
Ramon W. Johnson, M.D., M.B.A., *President-Elect*
Diane L. Gorgas, M.D., *Secretary-Treasurer*
James D. Thomas, M.D., *Member-at-Large*
Wallace A. Carter, M.D., *Member-at-Large*

Directors

Felix K. Ankel, M.D.
Yvette Calderon, M.D., M.S.
Hala Durrah, M.T.A.
Susan E. Farrell, M.D., Ed.M.
Kim M. Feldhaus, M.D.
Theodore J. Gaeta, D.O., M.P.H.
Deepi G. Goyal, M.D., M.H.A.
Lynne Holden, M.D.
John L. Kendall, M.D.
Ernest E. Wang, M.D.
Suzanne R. White, M.D., M.B.A.

Executive Staff

Earl J. Reisdorff, M.D., *Executive Director*
Kathleen C. Ruff, M.B.A., *Chief Administrative Officer*
Melissa A. Barton, M.D., *Director of Medical Affairs*
Chadd K. Kraus, D.O., M.P.H., Dr.PH., *Director of Research*

Associate Executive Directors

Timothy J. Dalton, *Evaluation and Research*
Angela J. McGoff, *Certification Services*
Michele C. Miller, *Systems and Technology*
Michelle M. Mulhern, M.P.A., *Organizational Services*
Nell A. Newton, *Operations*

Past Executive Directors

Benson S. Munger, Ph.D. (1979-1999)
Mary Ann Reinhart, Ph.D. (2000-2010)

ABEM-CERTIFIED PHYSICIANS

44,195 current ABEM-certified physicians

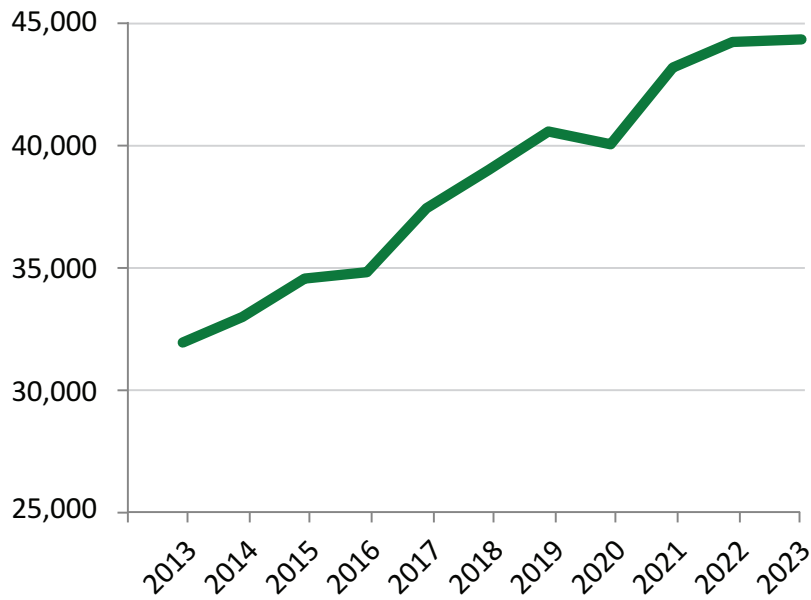
8% are ABEM-issued subspecialty certified (3,468)

96% are EM residency trained

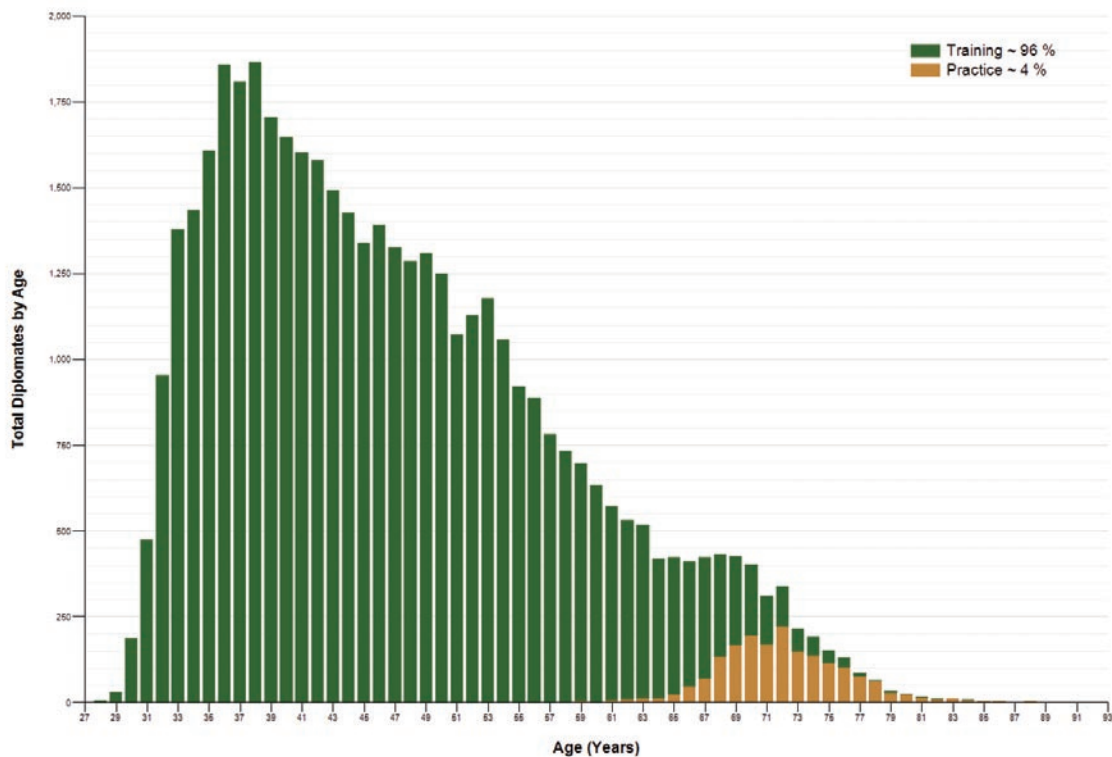
Data as of June 30, 2023

Number of Current ABEM-certified Physicians

44,195 Total Active ABEM-certified Physicians (as of June 30, 2023)



Distribution of ABEM-certified Physicians by Age and Training*

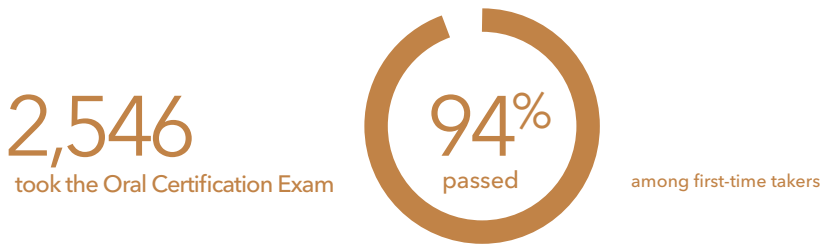


*Completed an EM residency program

EXAMINATION ACTIVITY

In 2022-23, three administrations of the Oral Certification Examination were held with 2,546 physicians taking the test between July 1, 2022 - June 30, 2023.

Regular Exam Activity



Detailed, longitudinal statistics are available on page 18.

STAYING CERTIFIED

The purpose of continuing certification is to maintain the highest standards of Emergency Medicine by partnering with physicians in their ongoing professional development; maintaining core knowledge, judgment, and skills; and integrating new medical advances in patient-centered care. ABEM believes that continuing certification assists physicians in realizing their intrinsic desire to be better clinicians and deliver safe, high-quality care.

MyEMCert

This year, the distribution of presentation scenarios and Key Advances were changed so that presentation scenarios comprise 70% of questions and Key Advances comprise 30%. Study points were developed; now all modules have a corresponding set of study points.

A Resuscitation module was also launched. Although the module does not currently count

toward MyEMCert continuing certification requirements, it offers an added no-cost learning opportunity. The primary goal of this module is to enhance physician knowledge, skills, and abilities in the evaluation and practice of resuscitation for newborn, child, and adult populations. Taking the module could potentially be used to meet local medical staff requirements to be proficient in the care of the critically ill or injured patient. Low-cost CME is also available with this module.

New LLSA Tests

The 2023 Emergency Medicine LLSA test became available April 1, 2023, and the 2024 Medical Toxicology LLSA test became available June 1, 2023. These activities provide additional opportunities for ABEM-certified physicians to tailor learning to their clinical practice.

2022-23 Top Five Improvement in Medical Practice Activities

2,418

Time-related (throughput time, ED length-of-stay, and other process time measures)

1,279

Stroke-related

1,040

Infectious Disease-related

829

Communication – Patient Care

671

Cardiac-related

9,232

TOTAL Improvement in Medical Practice Attestations

SUBSPECIALTY CERTIFICATION AND FOCUSED PRACTICE DESIGNATION

HALM Approved

In March 2023, the American Board of Medical Specialties (ABMS) approved Health Care Administration, Leadership, and Management as a new emergency medicine subspecialty. ABEM will serve as the administrative board, with the American Board of Anesthesiology, the American Board of Family Medicine, and the American Board of Preventive Medicine serving as co-sponsoring boards. This subspecialty opportunity is open to all physicians certified by an ABMS member board. The first exam will be administered in 2024.

3,407 ABEM-certified Physicians Hold a Subspecialty Certificate

In 2022-2023, ABEM issued 287 subspecialty certificates in ten subspecialties. ABEM-certified physicians also have access to subspecialty certification in Addiction Medicine, Brain Injury Medicine, Clinical Informatics, and Surgical Critical Care through other ABMS Boards.

Subspecialty	Certificates Issued in 2022-2023	Total Current Subspecialists
Emergency Medical Services	3	1,001
Medical Toxicology	76	554
Internal Medicine-Critical Care Medicine	46	342
Pediatric Emergency Medicine	0*	333
Sports Medicine	26	274
Clinical Informatics	NA	252
Hospice and Palliative Care Medicine	63	245
Addiction Medicine	NA	234
Anesthesiology Critical Care Medicine	31	148
Undersea and Hyperbaric Medicine	11	136
Neurocritical Care Medicine	20	62
Surgical Critical Care	NA	58
Pain Medicine	11	28
Health Care Administration, Leadership, & Management	0**	0
Total	287	3,407
Focused Practice Designation	Designations Issued 2022-2023	Total Current Designees
Advanced Emergency Medicine Ultrasonography	0*	284

* Certification examination not offered in 2022.

** First certification examination will be offered in 2024.

NA: Information not available; certificates issued by other ABMS boards.

VOLUNTEERS

Over 700 clinically active physicians volunteered their services to ABEM this year, a force that is essential to ABEM's success and the vitality of our specialty. Hundreds of examiners took part in each administration of the virtual Oral Exam, spanning over 11 days of testing plus additional days of training. Forty-five item writers produced new questions for multiple choice tests for Emergency Medicine certification, continuing certification, and subspecialty exams. Additional ABEM activities supported by volunteers include the following:

- Standard-setting panels reviewed each multiple choice question or Oral Exam case, rated its difficulty, and assessed its importance to the certification of emergency physicians.
- Bias and Fairness Panels evaluated whether different outcomes (among different demographic groups) on test questions or cases are due to reasons not relevant to the practice of EM.
- Other task forces and advisory groups, such as the LLSA CME reading group and the Stimulus Collection and Review Panel, assisted in the certification and recertification processes.
- The Key Advance Panel consists of thought leaders from a variety of backgrounds who select, develop, and maintain the topics/synopses of the Key Advances in MyEMCert
- Resident Ambassador Panel members provided the perspectives of residents with certain ABEM activities, such as communication about the In-training Examination, applying for certification, the Residency Visitation Program, and the ABEM website.

Each of these volunteer physicians donated their time and effort to help ensure that everyone certified in EM or any of its subspecialties demonstrated the capacity to meet the high standards expected of our specialty.

Thank you!

A complete list of ABEM volunteers is available on the [ABEM website](#).

79 Standard-setting Panel Members

6 LLSA CME Reading Panel Members

11 Bias and Fairness Panel Members

612 Oral Examiners

63 EM Item Writers and Editors

11 Key Advance Panel Members

10 Stimulus Collection and Review Panel Members

32 Subspecialty Subboard and Examination Committee Members

10 Focused Practice Designation Exam Committee Members

3 Resident Ambassador Panel Members

17 Members of the Board of Directors

Subspecialty Representatives – ABEM Appointees

EMS Subboard

Mohamud R. Daya, M.D. (Chair)
Erica R. Carney, M.D.
K. Sophia Dyer, M.D.
William D. Fales, M.D.
Alexander P. Isakov, M.D.
Douglas F. Kupas, M.D.
Christian Martin-Gill, M.D.
Katie L. Tataris, M.D.
Marianne Gausche-Hill, ABEM Director Liaison

Health Care Administration, Leadership, and Management

Advisory Committee

Suzanne R. White, M.D., M.B.A., Chair
Marianne Gausche-Hill, M.D.

Assessment Committee

Suzanne R. White, M.D., M.B.A., Chair and Editor
Andrew C. Furman, M.D.

Hospice and Palliative Medicine

Jessica E. Stetz, M.D.

Medical Toxicology Subboard

Theodore C. Bania, M.D., M.S. (Chair)
Carl R. Baum, M.D.
Diane P. Calello, M.D.
Michael I. Greenberg, M.D., M.P.H.
Robert G. Hendrickson, M.D.
Christopher O. Hoyte, M.D.
Tammi H. Schaeffer, D.O.
Andrew I. Stolbach, M.D., M.P.A.
Susan E. Farrell, M.D., Ed.M. ABEM Director Liaison

Neurocritical Care Examination Committee

Rhonda S. Cadena, M.D.
Jordan B. Bonomo, M.D.
Evadne G. Marcolini, M.D.

Pediatric Emergency Medicine Subboard

David B. Burbulys, M.D.
Keri L. Carstairs, M.D.
Nathan W. Mick, M.D.
Timothy A. Horeczko, M.D.
Ramon W. Johnson, M.D., M.B.A.,
ABEM Director Liaison

Sports Medicine Examination Committee

Advisory Committee

Andrew D. Perron, M.D.

Assessment Committee

Anna L. Waterbrook M.D.

Undersea and Hyperbaric Medicine

Examination Committee

Heather Murphy-Lavoie, M.D.

Keith William Van Meter, M.D.

Focused Practice Designation Representatives

Advanced Emergency Medicine

Ultrasonography Examination Committee

John L. Kendall, M.D., Chair

Srikar Adhikari, M.D.

John Bailitz, M.D.

Meghan K. Herbst, M.D.

Timothy B. Jang, M.D.

Robert A. Jones, D.O.

Megan M. Leo, M.D.

Andrew S. Liteplo, M.D.

Rachel Liu, M.D.



Pictured left to right: Meghan K. Herbst, M.D.,
John L. Kendall, M.D., Megan M. Leo, M.D.,
Rachel Liu, M.D., John Bailitz, M.D., and Srikar Adhikari, M.D.
Not pictured: Timothy B. Jang, M.D., Robert A. Jones, D.O.,
and Andrew Liteplo, M.D.

2022-2023 HIGHLIGHTS

ABEM Mourns the Loss of J. Dave Barry, M.D.

ABEM and the Emergency Medicine community mourn the loss of J. David Barry, M.D., who died tragically September 2, 2022, while surfing in Southern California. Dr. Barry was elected to the ABEM Board of Directors in 2020. He was Chair of the Continuing Certification Committee and appointed as Liaison to the Medical Toxicology Subboard. He also served as a MyEMCert editor. Dr. Barry was first to volunteer for projects and to call ABEM-certified physicians who had

questions about the Board. ABEM will be providing an annual donation to the ACEP Government Services Chapter and an annual donation to the ABMS to fund the J. Dave Barry, M.D., ABEM Visiting Scholar.



Second Haley Academy Held

ABEM welcomed the second class into the Leon L. Haley, Jr., Bridge to the Future of Emergency Medicine Academy. Ten rising second-year, underrepresented in medicine (URiM) medical students were selected for this two-week opportunity offered by ABEM. Samuel M. Keim, M.D., M.S., ABEM President, and Yvette Calderon, M.D., M.S., Director and Chair of the ABEM Diversity, Equity, and Inclusion Committee

welcomed the group. The students were also told about the vital role they could play in the future of medicine. During the Haley Academy, the aspiring physicians had the opportunity to be immersed in educational and hands-on experiences in critical topics related to disparities in health care, leadership, physician wellness, public health issues, applying for residency, and more. [Learn more.](#)

New Members of Resident Ambassador Panel Selected

ABEM selected Joan W. Chou, M.D., Charles Sanky, M.D., M.P.H., and Barbara Van De Water, M.B.A., M.S., D.O., as members of the [second Resident Ambassador Panel](#). Members will

provide a resident perspective to certain ABEM activities, such as applying for certification, communication with residents, the Residency Visitation Program, and the ABEM website.

Becoming Certified Initiative

The Becoming Certified Initiative started in 2021 to explore all facets of initial certification. The Board assembled a task force to lead the initiative. They conducted focus groups, issued multiple surveys, and convened a summit of stakeholders. What ABEM learned from stakeholders is that they believe that ABEM should maintain high standards for certification and create an assessment that is more relevant to practice and adaptable to

changes in medicine. ABEM also needs to better assess:

- Team management/leadership
- Task switching
- High-stakes communications/difficult conversations
- Procedural skills
- Prioritization

The Board will be announcing its final findings in late 2023.

Newly Elected Directors

The Board of Directors elected three new physician members in 2022-2023: [Lynne Holden, M.D.](#), [Barry J. Knapp, M.D.](#), and [John P. Marshall, M.D., M.B.A.](#) Dr. Holden was elected in December 2022 to fill the seat formerly held by J. Dave Barry, M.D., who passed away in September 2022; her term began in January 2023. Dr. Holden is a professor in the Department of Emergency Medicine and Senior Associate Dean for Diversity and Inclusion at the Albert Einstein College of Medicine in New York, New York. When Dr. Holden obtained full professorship in Emergency Medicine in 2018, she was just the fifth African American woman in the U.S. to achieve that position.

Dr. Knapp and Dr. Marshall were elected at the February 2023 Board meeting. Dr. Knapp is a professor and chair of the Department of Emergency Medicine at Eastern Virginia Medical School in Norfolk, Virginia, and senior partner with Emergency Physicians of Tidewater. Dr. Marshall is chair of the Department of Emergency Medicine and Vice President of Medical Affairs at Maimonides Medical Center in Brooklyn, New York.



Lynne Holden, M.D.



Barry J. Knapp, M.D.,



John P. Marshall,
M.D., M.B.A.

New ABEM National Academy of Medicine Scholar Selected

The National Academy of Medicine (NAM) selected Caitlin Rublee, M.D., M.P.H., as the [2022-2024 ABEM NAM Fellow](#). Dr. Rublee is an assistant professor in the Department of Emergency Medicine and Department of Environmental and Occupational Health; assistant fellowship director, Climate and Health Science Policy fellowship; and director of the Graduate Medical Education, Climate and Health

Program, University of Colorado School of Medicine and Colorado School of Public Health in Aurora, Colorado.



Caitlin Rublee,
M.D., M.P.H.

ABEM Signs Joint DEI Vision Statement

The American Board of Emergency Medicine released a [joint vision statement](#) from a collaboration among all major Emergency Medicine organizations. ABEM supports and

believes in promoting and cultivating a diverse, equitable, and inclusive environment in Emergency Medicine.

Milestone Recognition for Nearly 600 Physicians

ABEM recognizes physicians who, as of December 31, 2022, have marked 30 years of being board certified in Emergency Medicine with a special certificate. This year's recipients included nearly 600 physicians who had been board certified for 30 years as of December 31, 2022. Certificates are awarded annually to diplomates who achieve this milestone. ABEM applauds these physicians who have demonstrated a career-long commitment to excellence. A list of the 2022 recipients is posted on the [ABEM website](#).



Research Publications

Beeson MS, Bhat R, Broder JS, et al., 2022 EM Model Review Task Force; Barton MA, Keehbauch JN; American Board of Emergency Medicine. The 2022 model of the clinical practice of emergency medicine. *J Emerg Med* 2023 Jun;64(6):659-95. doi: 10.1016/j.jemermed.2023.02.016.

Beeson MS, Barton MA, Reisdorff EJ, et al. Comparison of performance data between emergency medicine 1-3 and 1-4 program formats. *J Am Coll Emerg Physicians Open* June 2023;4(3):e12991. doi: 10.1002/emp2.12991

Lu DW, Zhan T, Bilimoria KY, et al. Workplace mistreatment, career choice regret, and burnout in emergency medicine residency training in the United States. *Ann Emerg Med* 2023;81(3):706-14. doi: <https://doi.org/10.1016/j.annemergmed.2022.10.015>.

Gettel CJ, Courtney DM, Bennett CL. Attrition from the US emergency medicine workforce during early Stages of the COVID-19 pandemic. *Ann Emerg Med* 2023 May 2:S0196-0644(23)00176-2. doi: 10.1016/j.annemergmed.2023.03.002 Online ahead of print.

Reisdorff EJ, Masselink LE, Gallahue FE, et al. Factors associated with emergency physician income. *J Am Coll Emerg Physicians Open* 2023 Apr;4(2):e12949. doi: 10.1002/emp2.12949

Chudnofsky CR, Reisdorff EJ, Joldersma KB, et al. Early validity and reliability evidence for the American Board of Emergency Medicine Virtual Oral Examination. *AEM Educ Train* 2023. Epub March 26. doi.org/10.1002/aet2.10850

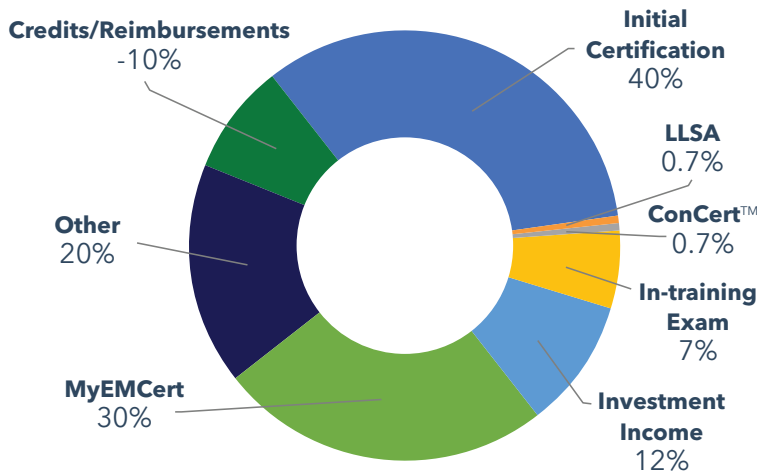
Barton MA, Lall MD, Johnston MM, et al. Reliability and validity support for an abbreviated Copenhagen burnout inventory using exploratory and confirmatory factor analysis. *J Am Coll Emerg Physicians Open* 2022. Epub August 8. DOI: 10.1002/emp2.12797

Nelson LS, Calderon Y, Ankel FK, et al., Research Committee, American Board of Emergency Medicine; Clark-Roumpz LA; Purosky RG; Johnston MM, American Board of Emergency Medicine. American Board of Emergency Medicine report on residency and fellowship training information (2021-2022). *Ann Emerg Med* 2022 Jul;80(1):74-83.e8. doi: 10.1016/j.annemergmed.2022.05.014.

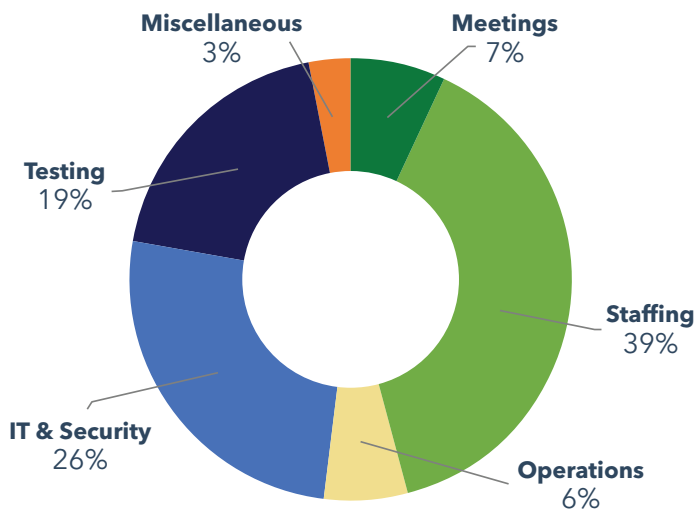
FINANCES

In fiscal year 2021-22, ABEM realized \$16,135,646 (line 9) in operating income against \$11,139,718 (line 17) in operating expenses, for a positive operating margin of \$734,205 (line 19). At the same time, \$3,920,701 (line 10) came from investment income, for a net margin of (\$3,186,496). Data from ABEM's 2021 Audited Financial Statement is provided below. ABEM has received GuideStar's Platinum Seal of Transparency for the last four years.

Revenue by Category



Spending by Category



Audited Statement of Financial Position

June 30, 2022

Assets

Current assets:	
Cash and cash equivalents	\$2,066,028
Accrued investment income	83,120
Prepaid expenses	280,194
Investments	47,104,317
Total current assets	\$49,533,659
Property, equipment, and software (net)	\$3,848,867
Other assets:	
Deposits	\$160,000
Total assets	\$53,542,526

Liabilities and Net Assets

Current liabilities:	
Accounts payable	\$161,714
Accrued payroll and taxes	25,170
Deferred Revenue	2,250,621
Line of Credit	5,000,000
Total current liabilities	7,437,505
Other liabilities:	
Compensated absences	\$822,243
Total liabilities	\$8,259,748
Net assets/without donor restrictions	\$45,282,778
Total liabilities and net assets	\$53,542,526

Revenues **\$22,890,481**

Expenses

Direct certification expenses	\$6,306,000
Governance	1,800,331
International	10,121
Office administration	3,104,705
Outreach/liaison	1,020,670
Program development	1,306,626
Research	178,758
Subspecialties	707,622
Training/academic relations	888,941
Miscellaneous	74,473
Total expenses	\$15,398,247

Change in net assets* \$7,492,234

Net assets, at beginning of year \$37,790,544

Net assets, at end of year **\$45,282,778**

* Before other income and gains

SENIOR DIRECTORS

Thank you for your legacy and contributions to the specialty of Emergency Medicine.

Gail V. Anderson, Sr., M.D. 1976–1989
Walter R. Anyan, Jr., M.D. 1995–2003
Jill M. Baren, M.D., 2012–2021
William G. Barsan, M.D. 1993–2001
Jill M. Baren, M.D. 2012–2021
J. David Barry, M.D., 2020–2022
Michael S. Beeson, M.D., 2013–2022
Carol D. Berkowitz, M.D. 2003–2006
Howard A. Bessen, M.D. 2002–2010
Michael D. Bishop, M.D. 1988–1996
Brooks F. Bock, M.D. 1995–2004
G. Richard Braen, M.D. 1988–1996
Glenn D. Braunstein, M.D. 2002–2006
Dick D. Briggs, Jr., M.D. 1994–2002
Kerryann B. Broderick, M.D., 2011–2019
Paul D. Bruns, M.D. 1980–1983
Michael L. Carius, M.D. 2009–2018
Carl R. Chudnofsky, M.D., 2014–2022
Joseph E. Clinton, M.D. 1986–1994
Robert E. Collier, M.D. 2004–2012
Lily C. A. Conrad, M.D. 2002–2010
Francis L. Counselman, M.D. 2008–2016
Rita Kay Cydulka, M.D. 2002–2010
Robert H. Dailey, M.D. 1976–1982
Daniel F. Danzl, M.D. 1991–1999
Steven J. Davidson, M.D. 1986–1995
John H. Davis, M.D. 1979–1984
Richard E. Dean, M.D. 1991–1994
James J. Dineen, M.D. 1976–1980
Frank A. Disney, M.D. 1979–1980
Lynnette Doan-Wiggins, M.D. 1999–2008
E. John Gallagher, M.D. 1995–2003
Joel M. Geiderman, M.D. 2003–2011
William E. Gotthold, M.D. 1994–2003
Jeffrey G. Graff, M.D. 1996–2005
Harris B. Graves, M.D. 1980–1987
Leon L. Haley, Jr., M.D., 2017–2021
R. R. Hannas, Jr., M.D. 1976–1988
Gerald B. Healy, M.D. 1988–1992
Barry N. Heller, M.D. 2008 – 2017
Robert S. Hockberger, M.D. 1995–2004
Gwendolyn L. Hoffman, M.D. 1994–2003
Leonard D. Hudson, M.D. 1990–1994
Bruce D. Janiak, M.D. 1986–1995
Carl Jelenko, III, M.D. 1976–1980
James H. Jones, M.D. 2005–2015
R. Scott Jones, M.D. 1988–1991
Allen P. Klippel, M.D. 1976–1982
Robert K. Knopp, M.D. 1988–1993
Terry Kowalenko, M.D., 2010–2019
David A. Kramer, M.D. 2009–2013
Ronald L. Krome, M.D. 1976–1988
Jo Ellen Linder, M.D. 2004–2012
Louis J. Ling, M.D. 1997–2007
O. John Ma, M.D. 2013–2019
Catherine A. Marco, M.D. 2009–2018
Mark A. Malangoni, M.D. 1998–2002
Mary Nan S. Mallory, M.D., 2012–2022
Vincent J. Markovchick, M.D. 1994–2002
M. J. Martin, M.D. 1990–1994, 1996–1998
John B. McCabe, M.D. 1996–2006
Henry D. McIntosh, M.D. 1979–1986
W. Kendall McNabney, M.D. 1982–1986
Harvey W. Meislin, M.D. 1986–1994
J. Mark Meredith, M.D. 2004–2012
Sheldon I. Miller, M.D. 1999–2006
James D. Mills, M.D. 1976–1988
John C. Moorhead, M.D. 2004–2014
Robert L. Muelleman, M.D. 2011–2019
John F. Murray, M.D. 1986–1989
Robert C. Neerhout, M.D. 1986–1994
Lewis S. Nelson, M.D., 2013–2021
Richard N. Nelson, M.D. 2004–2013
Michael S. Nussbaum, M.D. 2002–2006
Thomas K. Oliver, Jr., M.D. 1980–1981
Debra G. Perina, M.D. 2003–2011
Nicholas J. Pisacano, M.D. 1979–1986
Roy M. Pitkin, M.D. 1990–1998
George Podgorny, M.D. 1976–1988
Peter T. Pons, M.D. 1996–2004
J. David Richardson, M.D. 1994–1998
Leonard M. Riggs, Jr., M.D. 1981–1986
Frank N. Ritter, M.D. 1979–1988
Peter Rosen, M.D. 1976–1986
Robert J. Rothstein, M.D. 1996–2004
Douglas A. Rund, M.D. 1988–1997
Earl Schwartz, M.D. 1994–2002
Richard I. Shader, M.D. 1980–1990
Roger T. Sherman, M.D. 1984–1988
Rebecca Smith-Coggins, M.D. 2007–2015
Mark T. Steele, M.D. 2003–2012
Richard M. Steinhilber, M.D. 1979–1980
Richard L. Stennes, M.D. 1988–1996
Robert W. Strauss, M.D. 2007–2015
Henry A. Thiede, M.D. 1979–1980, 1984–1990
Harold A. Thomas, M.D. 2001–2010
Judith E. Tintinalli, M.D. 1982–1991
Robert Ulstrom, M.D. 1982–1986
Michael V. Vance, M.D. 1986–1995
David K. Wagner, M.D. 1976–1988
Robert P. Wahl, M.D. 2012–2020
Edward E. Wallach, M.D. 1998–2006
Gerald P. Whelan, M.D. 1988–1998
John G. Wiegenstein, M.D. 1976–1986

EXAMINATION STATISTICS

Certification

Date	App's Rec'd	Qualifying Examination						Oral Certification Examination					
		EM Residency-eligible First-time Takers			Total Candidates ³			EM Residency-eligible First-time Takers			Total Candidates ³		
		# Took	# Pass	% Pass	# Took	# Pass	% Pass	# Took	# Pass	% Pass	# Took	# Pass	% Pass
1980 and prior	1,875	-	-	-	1,496	998	67	-	-	-	399	248	62
1981	1,035	-	-	-	1,142	825	72	-	-	-	548	356	65
1982	1,149	-	-	-	1,254	869	69	-	-	-	998	571	57
1983	1,242	-	-	-	1,335	885	66	-	-	-	1,293	766	59
1984	1,399	-	-	-	1,694	1,108	65	-	-	-	1,339	912	68
1985	1,600	-	-	-	2,016	1,274	63	-	-	-	1,066	801	75
1986	1,709	-	-	-	2,147	1,124	52	-	-	-	1,425	993	70
1987	1,977	-	-	-	2,479	1,429	58	-	-	-	1,503	1,192	79
1988	2,915	-	-	-	2,607	1,375	53	-	-	-	1,602	1,227	77
1989	886	Postponed to 5/30/90						-	-	-	1,627	1,266	78
1990	1,069	-	-	-	3,446	1,953	57	-	-	-	1,350	1,059	78
1991	624	-	-	-	1,510	853	56	-	-	-	1,464	1,185	81
1992	742	-	-	-	1,396	820	59	-	-	-	1,446	1,146	79
1993	964	-	-	-	1,281	822	64	-	-	-	977	753	76
1994	785	-	-	-	1,329	781	59	-	-	-	1,095	894	82
1995 ¹	847	753	664	88	1,249	769	62	692	669	97	1,028	890	87
1996	860	839	756	90	1,290	899	70	703	658	94	968	808	84
1997	943	920	811	89	1,335	903	68	795	711	89	934	795	85
1998	1,005	1,003	909	91	1,426	1,036	73	864	788	91	1,059	895	85
1999	1,099	1,092	972	89	1,457	1,053	72	988	851	86	1,083	901	83
2000	1,108	1,087	985	91	1,488	1,085	73	1,040	957	92	1,272	1,124	88
2001	1,173	1,155	1,026	89	1,471	1,135	77	1,064	1,000	94	1,257	1,133	90
2002	1,171	1,176	1,057	90	1,516	1,181	78	1,142	1,040	91	1,291	1,140	88
2003	1,198	1,179	1,092	93	1,496	1,205	81	1,158	1,058	91	1,278	1,140	89
2004	1,256	1,242	1,099	88	1,490	1,188	80	1,204	1,142	95	1,335	1,237	93
2005	1,299	1,287	1,164	90	1,593	1,283	81	1,197	1,132	95	1,325	1,233	93
2006	1,329	1,302	1,200	92	1,606	1,344	84	1,239	1,166	94	1,289	1,204	93
2007	1,411	1,408	1,267	90	1,645	1,363	83	1,328	1,254	94	1,431	1,340	94
2008	1,387	1,366	1,246	91	1,638	1,371	84	1,357	1,288	95	1,434	1,353	94
2009	1,448	1,430	1,295	91	1,717	1,429	83	1,408	1,337	95	1,484	1,397	94
2010	1,517	1,519	1,381	91	1,779	1,515	85	1,416	1,335	94	1,470	1,378	94
2011	1,584	1,560	1,417	91	1,827	1,540	84	1,534	1,487	97	1,665	1,603	96
2012	1,612	1,615	1,511	94	1,898	1,653	87	1,548	1,515	98	1,643	1,599	97
2013	1,711	1,704	1,520	89	1,952	1,617	83	1,704	1,675	98	1,712	1,678	98
2014	1,739	1,709	1,536	90	2,028	1,676	83	1,620	1,559	96	1,638	1,571	96
2015	1,811	1,807	1,639	91	2,118	1,788	84	1,684	1,648	98	1,729	1,682	97
2016	1,867	1,853	1,732	93	2,129	1,893	89	1,765	1,722	98	1,827	1,778	97
2017	1,986	1,975	1,834	93	2,215	1,961	89	1,894	1,818	96	1,952	1,868	96
2018	2,133	2,101	1,999	95	2,364	2,173	92	1,954	1,895	97	2,006	1,943	97
2019	2,285	2,299	2,123	92	2,522	2,238	89	2,169	2,051	95	2,277	2,133	94
2020	2,485	2,435	2,192	90	2,632	2,324	88	0 ⁴	0 ⁴		0 ⁴	0 ⁴	
2021	2,519	2,450	2,260	92	2,715	2,450	90	4,470	4,170	93	4,763	4,421	93
2022	2,652	2,639	2,391	91	2,890	2,552	88	2,423	2,249	93	2,498	2,312	93
Total	63,406	42,905	39,078	91²	76,618	57,740	75²	40,360	38,175	95²	61,780	53,925	87²

¹ 1995 was the first year that a reference group of EM residency-eligible, first-time test takers was used to construct the written certification examination, now known as the qualifying examination.

² Number indicates the percent of the total that passed.

³ Candidates do not include former diplomates attempting to regain certification through the qualifying and/or oral examination.

⁴ The 2020 Oral Certification Examination administrations were canceled due to the COVID pandemic. The December 2020 administration counts are included in the 2021 counts.

ConCert™ Examination

Year	Diplomates			Former Diplomates		
	# Took	# Pass	% Pass	# Took	# Pass	% Pass
2004	1,264	1,169	92	127	60	47
2005	1,407	1,295	92	157	92	59
2006	1,367	1,296	95	206	129	63
2007	1,569	1,483	95	135	81	60
2008	1,778	1,687	95	138	104	75
2009	1,657	1,576	95	119	82	69
2010	1,955	1,897	97	121	94	78
2011	2,022	1,943	96	147	99	67
2012	1,762	1,681	95	154	100	65
2013	1,971	1,895	96	189	132	70
2014	2,391	2,335	98	142	19	31
2015	2,503	2,412	96	124	74	60
2016	2,582	2,478	96	136	78	57
2017	2,653	2,535	96	146	79	54
2018	2,544	2,433	96	147	82	56
2019	2,431	2,330	96	189	106	56
2020	2,446	2,218	91	156	71	46
2021	951	916	96	57	8	14
2022	113	98	87	24	13	54
Total	35,366	33,677	95¹	2,614	1,586	61¹

¹ Number indicates the percent of the total who passed.

Statistics are reported by calendar year. The statistics accurately reflect the examinations administered during the designated periods, and all examination data are included. Candidates who took more than one examination are included more than once.

Total number of active ABEM-certified physicians on 12/31/2022 was 44,048.

Subspecialty Certification

Year	ACCM	EMS	HPM	IM-CCM	Med Tox	NCC	Pain	Ped EM	SPM	UHM	Total
1993								38	8		46
1994								23	0		69
1995					51			0	12		132
1996					0			0	0		132
1997					32			39	8		211
1998					0			0	0		211
1999					42			20	8		281
2000					24			0	0		305
2001					0			23	4	7	339
2002					30			0	2	7	378
2003					0			12	2	11	403
2004					30			19	3	42	497
2005					0			0	3	17	517
2006					39			10	12	7	585
2007					0			0	5	6	596
2008			12		31			0	12	12	663
2009			0		0		1	19	9	21	713
2010			23		39		2	0	13	38	828
2011			0		0			26	14	15	883
2012			60	25	38		1	0	11	5	1,023
2013		225	0	19	0		2	35	16	5	1,330
2014	12	0	20	25	48		0	0	14	4	1,453
2015	9	220	0	28	0		1	30	16	3	1,765
2016	17	0	32	40	53		0	0	26	6	1,939
2017	11	183	0	34	0		1	27	17	2	2,229
2018	16	0	31	26	49		2	0	19	2	2,374
2019	11	204	0	36	0		2	34	13	3	2,699
2020	17	0	30	26	59		1	0	4	4	2,840
2021	23	178	0	42	0	42	4	27	37	9	3,202
2022	31	3	63	46	81	20	11	1	28	12	296
Total Certificates Issued	147	1,060	271	347	646	62	28	383	316	238	3,498
Total Current Diplomates	148	1,002	211	303	563	62	26	304	275	133	3,027

ACCM: Anesthesiology Critical Care Medicine
 EMS: Emergency Medical Services
 HPM: Hospice and Palliative Medicine
 IM-CCM: Internal Medicine - Critical Care Medicine
 MedTox: Medical Toxicology

NCC: Neurocritical Care
 Pain: Pain Medicine
 PedEM: Pediatric Emergency Medicine
 SPM: Sports Medicine
 UHM: Undersea and Hyperbaric Medicine



American Board of Emergency Medicine

3000 Coolidge Road • East Lansing, Michigan 48823-6319
517.332.4800 • www.abem.org

A MEMBER BOARD OF THE AMERICAN BOARD OF MEDICAL SPECIALTIES